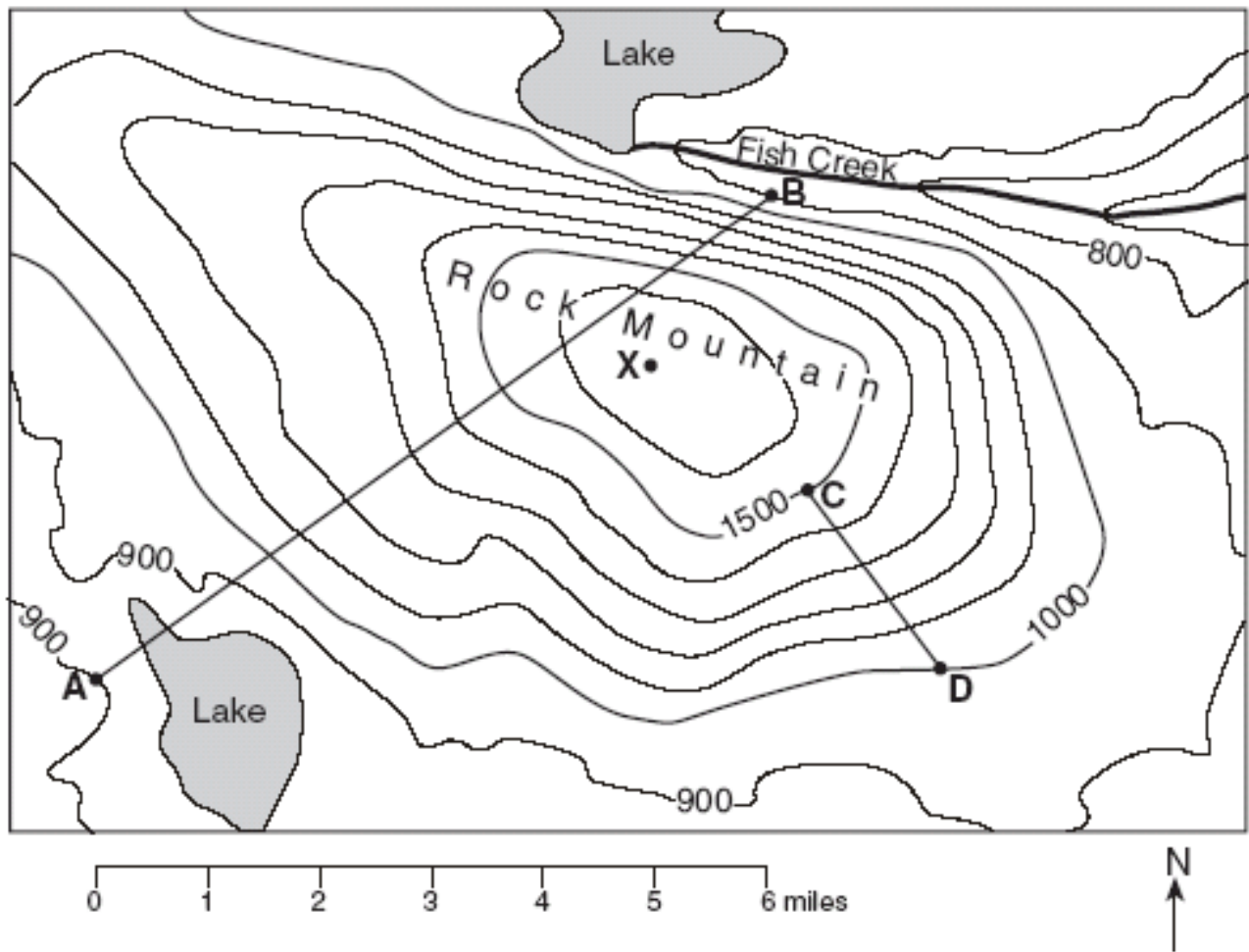


Earth Systems  
Mr. Varner  
Topographic and Geologic Maps  
**Topographic Profile Lab**

Name: \_\_\_\_\_ Date: \_\_\_\_\_ Period: \_\_\_\_\_

### *Topographic Map Worksheet*

Base your answers to the following questions on the topographic map below. Points A, B, C, D, and X represent locations on the map. Elevations are measured in feet.



1. What is the elevation of each of the following points?

A. \_\_\_\_\_ B. \_\_\_\_\_ C. \_\_\_\_\_ D. \_\_\_\_\_

2. What is the contour interval of this map? \_\_\_\_\_

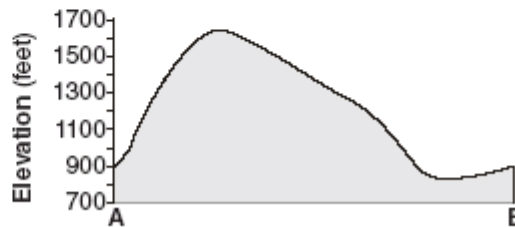
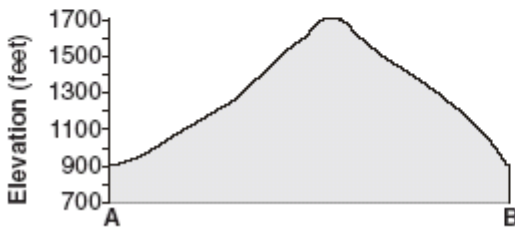
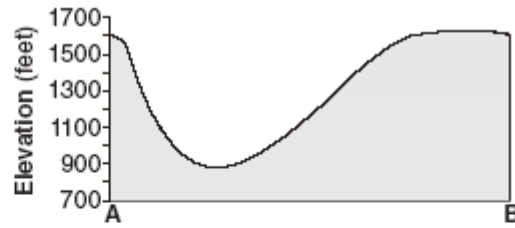
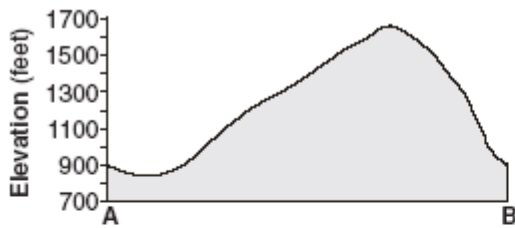
3a. Calculate the Gradient between C and D.

3b. Calculate the Gradient between A and B.

4. In what direction does Fish Creek Flow? \_\_\_\_\_

5. What is the elevation of Point X? \_\_\_\_\_

6. Which cross section best represents the profile along straight line AB?



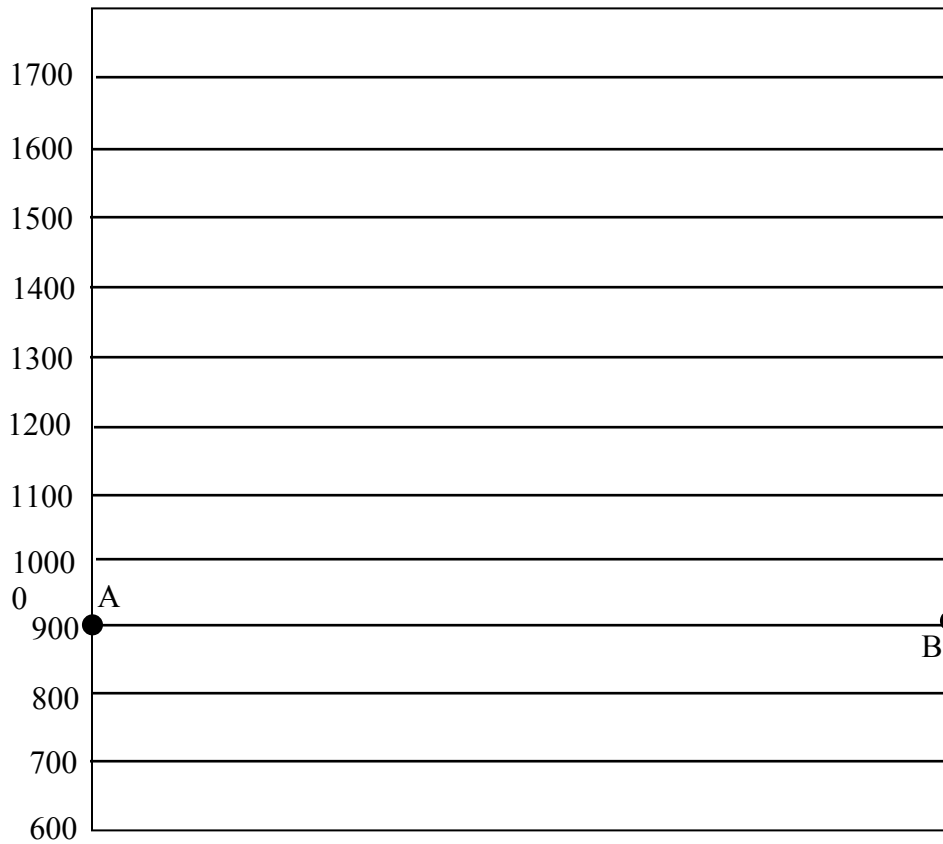
7. Which side of Rock Mountain is the steepest? (compass direction) \_\_\_\_\_

8. Which side of Rock Mountain has the gentlest slope? (compass direction) \_\_\_\_\_

9. On the grid, construct a topographic profile from point *A* to point *B* by following the directions below.

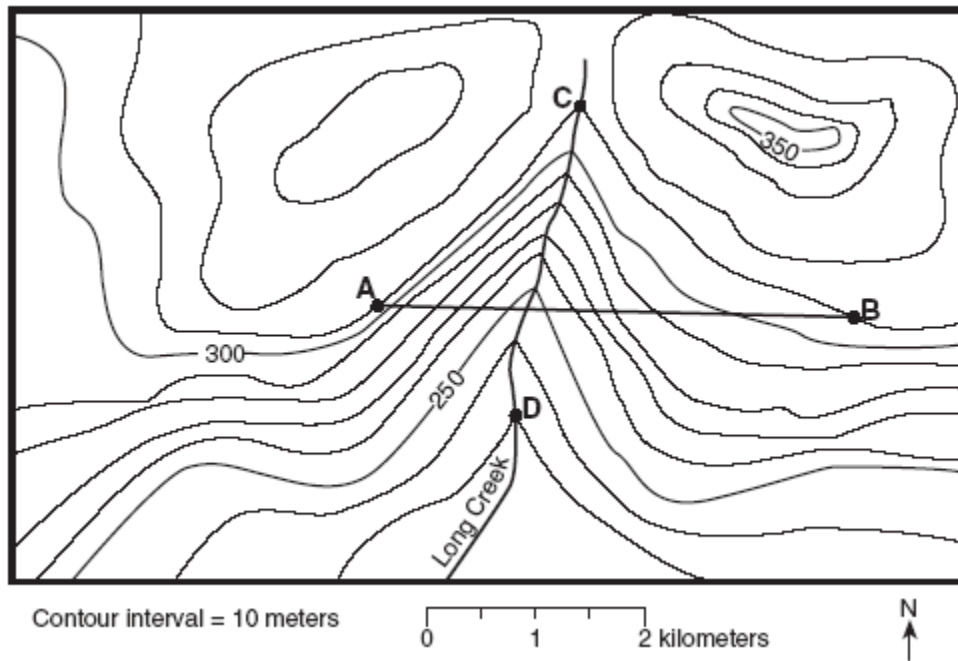
*a.* Plot the elevation along line *AB* by marking with an **X** each point where the contour line is crossed by line *AB*. Points *A* and *B* have been plotted for you.

*b.* Complete the profile by correctly connecting the plotted points with a smooth, curved line.

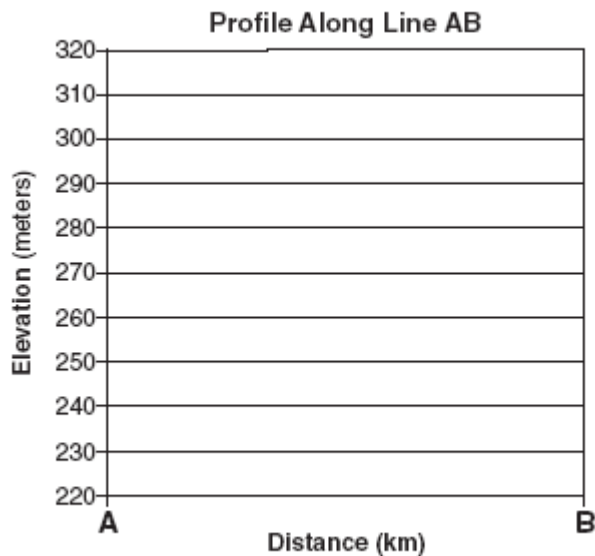


Name: \_\_\_\_\_ Date: \_\_\_\_\_ Period: \_\_\_\_\_

### Topographic Map Worksheet #2



64 On the grid below, construct a topographic profile along line *AB*, by plotting a point for the elevation of *each* contour line that crosses line *AB* and connecting the points with a smooth, curved line to complete the profile. [2]

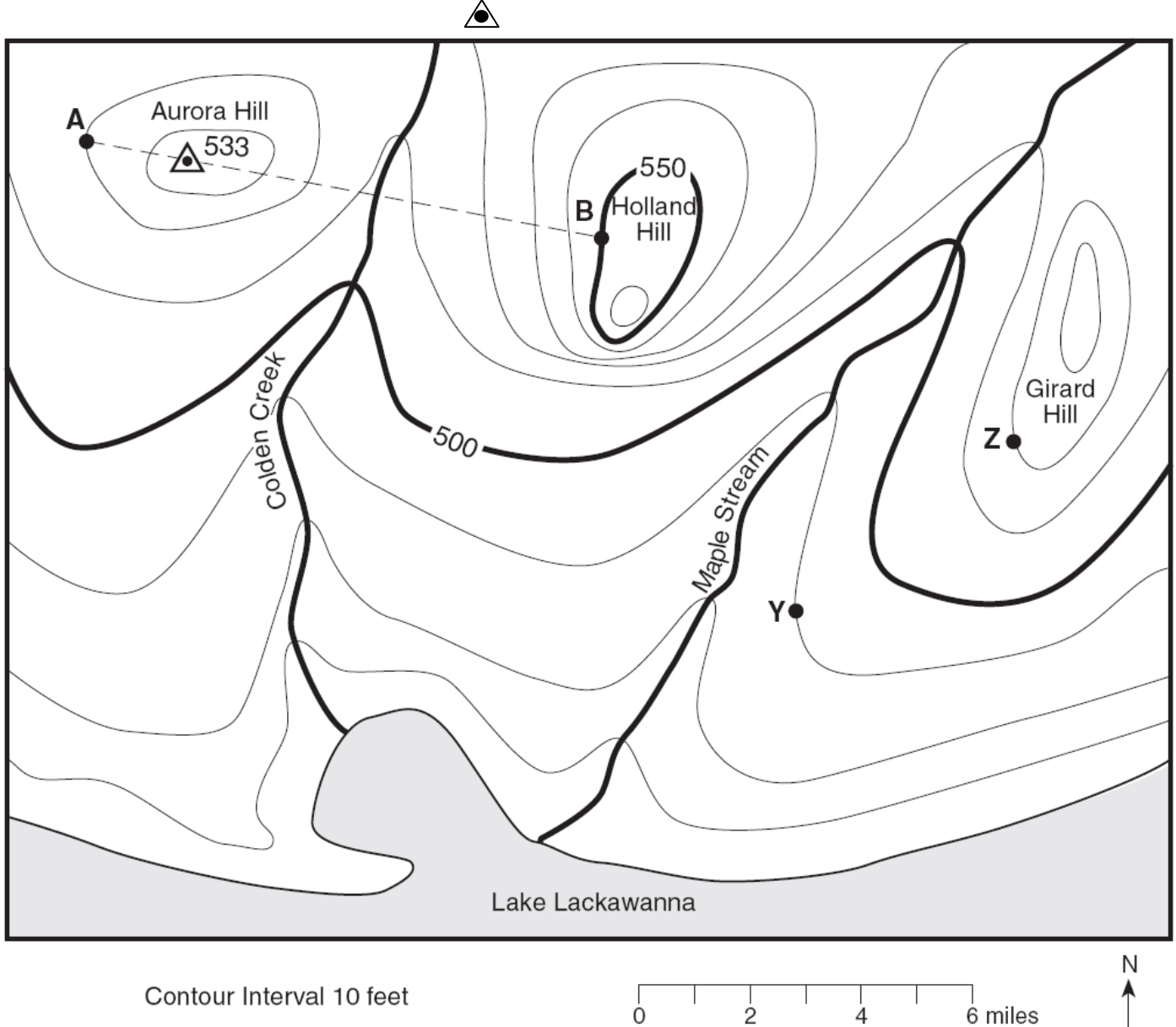


65. Calculate the gradient between C and D:

Name: \_\_\_\_\_ Date: \_\_\_\_\_ Period: \_\_\_\_\_

### Topographic Map Worksheet #3

Base your answers to questions 51 through 54 on the topographic map below. Points A, B, Y, and Z are reference points on the topographic map. The symbol 533 represents the highest elevation on Aurora Hill.



51 State the general compass direction in which Maple Stream is flowing. [1]

52 Calculate the gradient between points Y and Z on the map, and label the answer with the correct units. [2]

53 Describe the evidence shown on the map that indicates that the southern side of Holland Hill has the steepest slope. [1]

54 On the grid, construct a topographic profile from point *A* to point *B* by following the directions below.

*a* Plot the elevation along line *AB* by marking with an **X** each point where a contour line is crossed by line *AB*. Points *A* and *B* have been plotted for you. [2]

*b* Complete the profile by correctly connecting the plotted points with a smooth, curved line. [1]

